



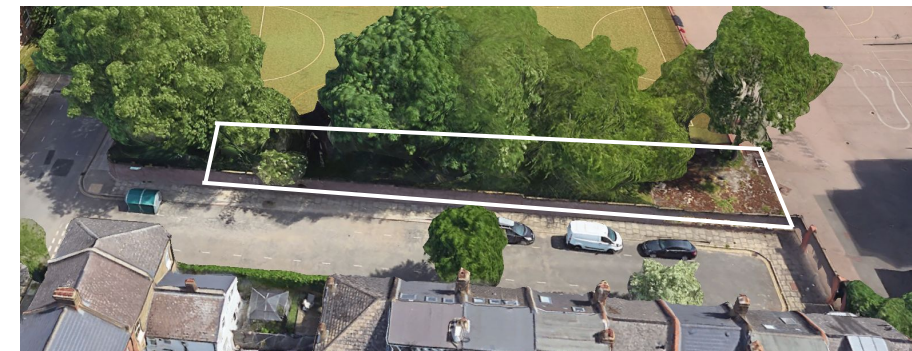
Levitt Bernstein
People.Design



Arts & Media School
ISLINGTON
DESIGN & TECHNOLOGY



Arts & Media School
ISLINGTON



Brief:



Entrances



Railway Fields Local Nature Reserve. Photo from Green Lanes.





Benches with Umbrella:A sizeable outdoor umbrella can protect you from the sun's harmful ultraviolet rays. The Umbrella gives you all kinds of privacy, not just the neighbors staring at your outdoor space. With the help of cantilever umbrellas with hinged arms, you can face the side where you want to block the Umbrella.



Hanging Flowers:Incorporating hanging plants in your garden decorating has so many benefits: living greenery is the ultimate luscious accessory. It's also scientifically proven to boost your environment by purifying the air, and to soothe stress.

Transparent Roof:Using a clear roof for the greenhouse can transmit the direct sun rays and encourage the seed sprouting, while opaque ones are perfect for taller plants that need a diffused heat and light.



Tree on lights:Tree on lights is make the tree more interesting and more decorative.Lights on Trees is making your garden more creative.

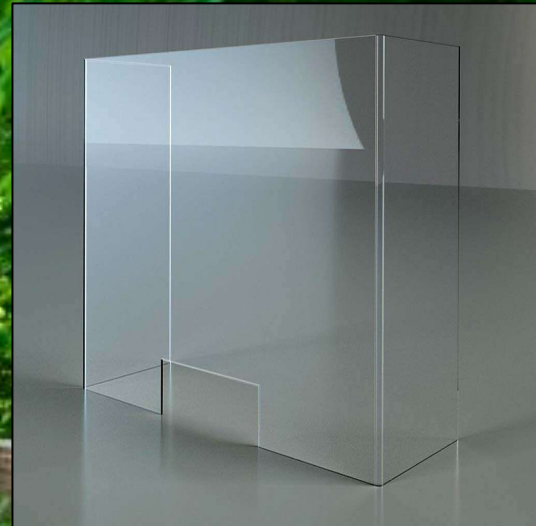




A Bamboo and leaf screen: To cover up the garden from the astroturf and the people on the outside to keep part of the garden/chill out space hidden.



Tree Chair/bench: This is to create a tree covered area where people can chill out and play card games and even eat lunch if they want to eat their lunch outside with their friends with a nice wind breeze, making them enjoy the natural environment at the same time.



Internal Plexiglass screening: The plexiglass is an optimal material for internal screening as it provides an ideal optical clarity and an excellent resistance to moisture and impacts.



Led Lighting: This type of illumination provides a welcoming and warm environment, in order to appeal aesthetically pleasing, and also provides an excellent lighting for internal buildings.



Nice lantern lights: can give light for when it turns dark during winter times and these can come in many shapes and sizes different colours and are very cheap and can be bought from pretty much anywhere and solve as a great source of light to fill the air in.



Stalls: these stalls can be used to hang out with your friends and can easily fit in a small area. They can also be used for different special occasions like if there was to be a workshop the visitors can use these stalls to talk to the students or during christmas time Students can give christmas cards to a teacher or somebody in there to save for the attended person to pass by for them to take.



Post boxes: post boxes can be used so you can send messages to your friends example birthday or christmas cards and maybe the younger children can put mail for the leaver year 11 to read to have a final goodbye to them or a final goodbye to a teacher etc. the only problem with this is that somebody has to deliver these witch is not easy sometimes.



Solar light: Solar light will help us because in the winter time it get darker. With these solar light it will be easier to see the bathway.



Arts & Media School
ISLINGTON

